

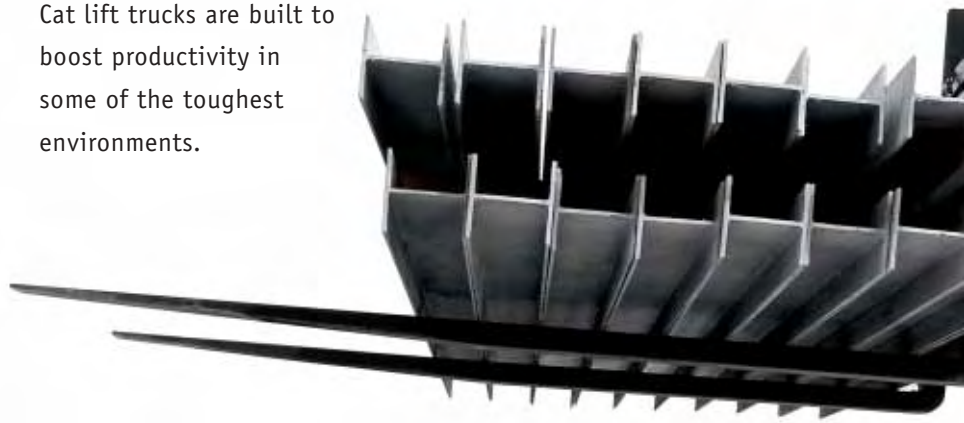
**15,500 lb Capacity Diesel
Pneumatic Tire Lift Truck**

CAT® Lift
Trucks



More Power To You

Count on rugged Cat® lift trucks for the high performance, dependability, and comfort you need to sustain productivity and maximize value. A robust 94-horsepower engine delivers exceptional acceleration and performance with minimal noise and fuel consumption. Automatic transmission, full hydrostatic steering, and vacuum-boosted brakes help decrease operator fatigue. Easy access to internal components simplifies routine maintenance. And we offer a range of carriage, mast, and other options to fit your application. From mast to motor, Cat lift trucks are built to boost productivity in some of the toughest environments.



In-Line, 6-Cylinder Diesel Engine

A durable 94-horsepower engine provides high torque, low noise, and reliable performance. It features 305 cubic inches of displacement and cold weather starting capabilities to -4°F.



Efficient, Compact Design

The compact dimensions enhance the operator's ability to enter and exit more confined areas. A low, wide stance and wide drive axle design improve lateral stability in rough conditions and at high lift heights.



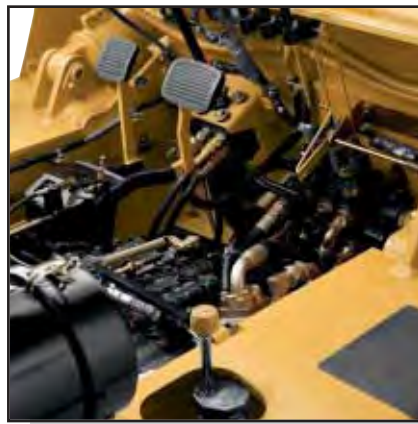


● **Toggle Switch Controls Top Speed**

For applications that require additional speed control, an easy-to-reach toggle switch is designed to lock the transmission in the lower gear.

● **Trunnion-Mounted Steer Axle**

A heavy-duty steer axle articulates up to 6° for smoother operation and stability. The large-diameter steer cylinder nests within the steer axle, helping to protect it from debris.



● **Asbestos-Free, Vacuum-Boosted Brakes**

The self-energizing, self-adjusting, hydraulic service brakes provide smooth, effective braking with nominal foot pedal pressure. The parking brake employs a separate shoe assembly on the input side of the drive axle for added dependability.



Effortless Hydrostatic Steering

Hydrostatic power steering reduces operator effort and enhances productivity. The system includes self-aligning kingpins supported by tapered roller bearings and adjustment-free, fixed-length tie rods to help reduce maintenance requirements.



Infinitely Adjustable Tilt Steering

The steering column allows for smooth positioning of the wheel over five inches of movement, accommodating most operator preferences and facilitating entry and exit.



Two-Speed, Automatic-Shift Transmission

The automatic transmission and high-stall torque converter offer precision inching and smooth acceleration. An auto-shift feature automatically shifts gears up or down based on travel speed to simplify operation and enhance productivity. As a result, the lift truck always starts out in first gear—reducing premature wear on components.





Operator's Compartment With Contoured Seat

The spacious operator's compartment includes a full-suspension, contoured seat with adjustable suspension. Controls like hydraulic levers are within easy reach.



Masts Enhance Productivity

Due to widely spaced channels, compact lift cylinders, and strategically positioned cross members, sturdy masts enhance visibility and provide fast lift and lowering speeds to increase productivity. Four carriages are available to meet your needs, including a sideshifting, hydraulic fork-positioning carriage.

Both Simplex and Triplex masts are available in a variety of heights, with full-rated capacities to 197-inch lift height. Masts are fabricated from high-strength steel and include rollers to absorb both lateral and longitudinal forces.



● Easy Monitoring Of Functions

The information your operators need is always close at hand with this easy-to-read instrument panel, which tilts with the steering wheel for sustained visibility.

Optional Low-Vibration Cabs

Operators experience all-around good visibility as well as low vibration and noise with these optional cabs, designed specifically for Cat lift trucks. Features include sliding glass windows, mechanical latches, and windshield wipers in front, back, and on top.



Easy-To-Lift Hood

Assisted by gas cylinders, the hood is easy to open and provides quick access for daily checks and routine maintenance.

Serviceability Under The Hood

Tool-free access to major components simplifies maintenance. The air filter, air cleaner, brake fluid reservoir, and dipsticks are easy to reach and check. A single bolt adjusts the fan belt, and a large-capacity cooling system helps protect engine components against high temperatures.



Rugged Drive Axle

Full-floating axle shafts and a gear-type planetary final drive, supported by tapered roller bearings, minimize stress common in rough terrain applications. Final torque multiplication occurs at the wheels, instead of the differential, so torque stress on the shafts, differential, and drive axle is reduced, thereby increasing axle life.



● **Ask For A Demonstration**

The advantages of the 15,500 lb capacity diesel pneumatic tire lift truck become obvious with a demonstration. See strong proof that Cat Lift Trucks and your Cat lift truck dealer can offer you more productivity-driven benefits for a strong return on your equipment investment. Call for an appointment today.



SPECIFICATIONS

| CHARACTERISTICS | | | DP70 | | | |
|-----------------|---|-------------------------------------|------------------------------------|----------------|--------------------------|------|
| 1 | Capacity | at rated load center | lb <i>kg</i> | 15,500 | 7000 | |
| 2 | | at load center – distance | in <i>mm</i> | 24 | 600 | |
| 3 | Power | diesel, gas, LP gas | | | diesel | |
| 4 | Tire type | cushion, pneumatic | | | pneumatic | |
| 5 | Wheels (x = driven) | number front / rear | | | x4 / 2 | |
| DIMENSIONS | | | | | | |
| 10 | Lift | maximum fork height with rated load | in <i>mm</i> | 197 | 5000 | |
| 11 | Lift with standard | maximum fork height | in <i>mm</i> | 148 | 3700 | |
| 12 | two-stage mast | free fork height | in <i>mm</i> | 7.9 | 200 | |
| 13 | Forks | thickness x length x width | in <i>mm</i> | 2.4 x 48 x 5.9 | 60 x 1220 x 150 | |
| | Fork spacing | out-to-out minimum / maximum | in <i>mm</i> | 15.4/65.5 | 390/1670 | |
| 14 | Tilt | forward / backward | | | 6 / 12 | |
| 15 | Overall dimensions | length to fork face | in <i>mm</i> | 143.3 | 3635 | |
| 16 | | width | standard dual drive tires | in <i>mm</i> | 85.6 | 2175 |
| | | | optional dual drive tires | in <i>mm</i> | N/A | |
| 17 | | height | with lowered mast | in <i>mm</i> | 115 | 2920 |
| 18 | | | seat height | in <i>mm</i> | 52 | 1320 |
| 19 | | | to top of overhead guard | in <i>mm</i> | 95.3 | 2420 |
| 20 | with extended mast | | in <i>mm</i> | 196.1 | 4980 | |
| 21 | Minimum outside turning radius | | in <i>mm</i> | 133.7 | 3395 | |
| 22 | Load moment constant | | in <i>mm</i> | 23 | 585 | |
| 23 | Minimum aisle – 90° stack – zero clearance w/out load | | in <i>mm</i> | 156.7 | 3980 | |
| PERFORMANCE | | | | | | |
| 40 | Speeds | travel speed loaded / empty | mph <i>km/h</i> | 13.7 / 17.1 | 22.0 / 27.5 | |
| | | lift speed loaded / empty | fpm <i>m/s</i> | 86 / 92 | .44 / .47 | |
| | | lowering speed loaded / empty | fpm <i>m/s</i> | 108 / 108 | .55 / .55 | |
| 43 | Drawbar pull | loaded at 1 mph (1.6 km) | lb <i>N</i> | 9135 | 40,634 | |
| | | loaded maximum | lb <i>N</i> | 12,100 | 52,553 | |
| 44 | Gradeability | loaded at 1 mph (1.6 km) | % | 26 | | |
| | | maximum loaded / empty | % | 35 / 21 | | |
| WEIGHT | | | | | | |
| 50 | Empty | | lb <i>kg</i> | 20,705 | 9390 | |
| 51 | Axle load | with rated load front / rear | lb <i>kg</i> | 32,520 / 3685 | 14,730 / 1660 | |
| | | without load front / rear | lb <i>kg</i> | 9085 / 11,620 | 4120 / 5270 | |
| CHASSIS | | | | | | |
| 60 | Tire size | front, standard dual drive tires | in | 8.25 x 15-12PR | | |
| | | front, optional dual drive tires | in | NA | | |
| 61 | | rear | in | 8.25 x 15-12PR | | |
| 62 | Wheelbase | | in <i>mm</i> | 90.6 | 2300 | |
| 63 | Tread width | front, standard dual drive tires | in <i>mm</i> | 65 | 1650 | |
| | | front, optional dual drive tires | in <i>mm</i> | NA | | |
| 64 | | rear tires | in <i>mm</i> | 65 | 1650 | |
| 65 | Ground clearance | at lowest point @ mast | in <i>mm</i> | 5.51 | 140 | |
| 66 | | at center of wheelbase | in <i>mm</i> | 10 | 255 | |
| 67 | Brakes | service | | | hydraulic w/vacuum boost | |
| 68 | | parking | | | mechanical-hand | |
| POWER TRAIN | | | | | | |
| 80 | manufacturer and model | | Mitsubishi S6S | | | |
| 81 | Engine | continuous output S.A.E. gross | HP <i>kW</i> | 94 | 70 | |
| | | | at r.p.m. | 2300 | | |
| 82 | Engine | maximum torque S.A.E. gross | lb-ft <i>kg-m</i> | 223 | 30.8 | |
| | | | at r.p.m. | 1600 | | |
| 83 | cylinder / displacement | | cu in <i>cm³</i> | 6 / 305 | 6 / 4996 | |
| 84 | Transmission | | type | | | |
| 85 | Transmission | | number of speeds forward / reverse | | | |
| 86 | Relief pressure | for attachments | psi <i>bar</i> | 2775 | 190 | |
| 87 | Noise level | mean value at operator's ear Leq | dB(A) | 84.5 | | |

SAFETY STANDARDS

These trucks are designed and manufactured to meet American Society of Mechanical Engineers (ASME) B56.1, Safety Standards for powered industrial trucks.

UL-Classified by Underwriters Laboratories, Inc., as to fire hazard only; Type D Industrial Trucks.

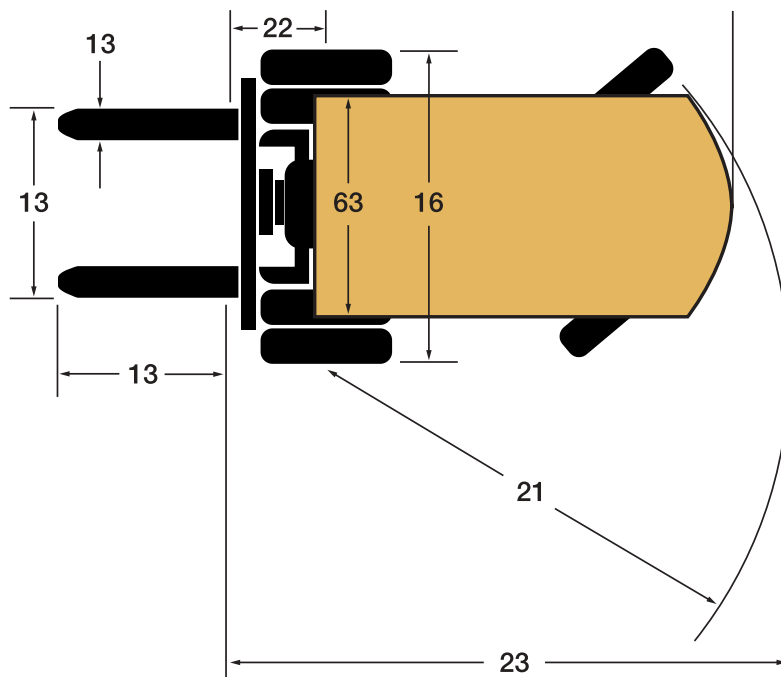
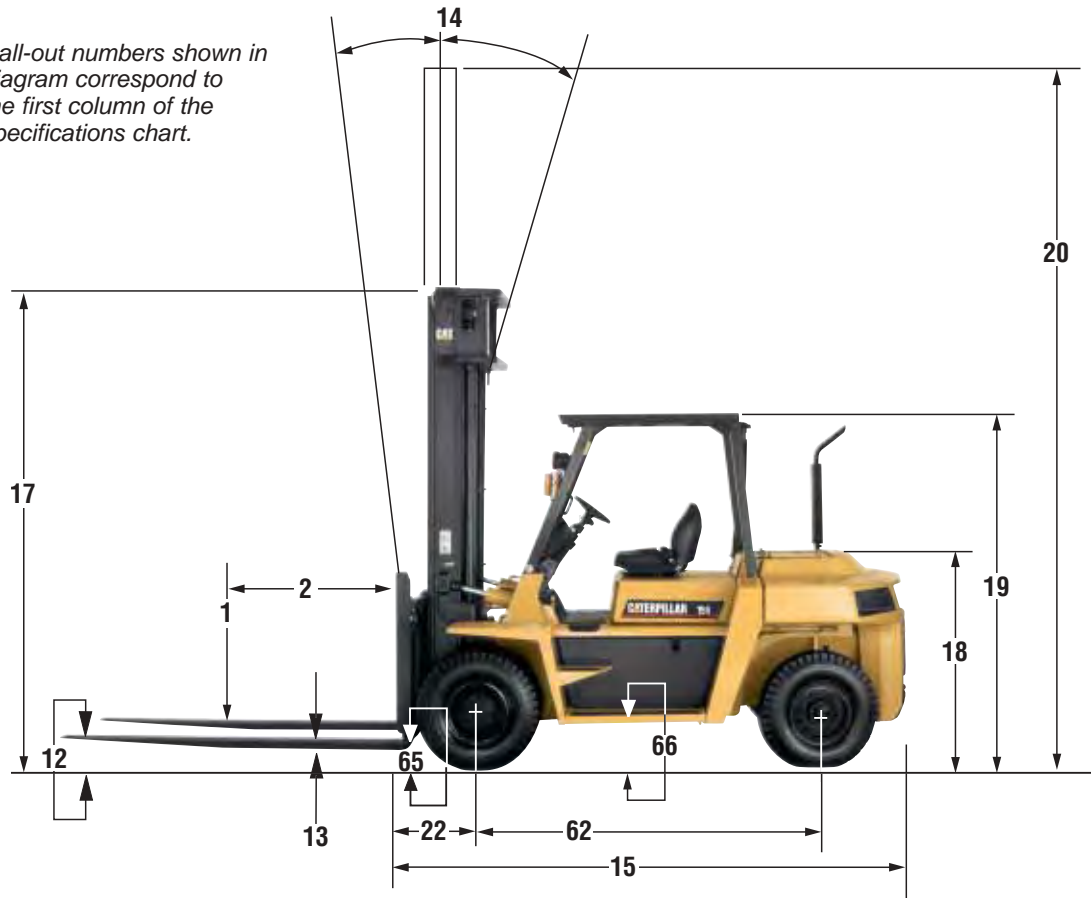
Users should be aware of, and adhere to, applicable codes and regulations regarding operator training, use, operation and maintenance of powered industrial trucks, including:

- ASME B56.1, part II.
- NFPA 505, fire safety standard for powered industrial trucks - type designations, areas of use, maintenance and operation.
- Occupational Safety and Health Administration (OSHA) regulations that may apply.

Specifications, equipment, technical data, photos and illustrations are based on information at time of printing and subject to change without notice. Some products may be shown with optional equipment.

NOTE: These specifications assume the use of drive axles, tires and tilt angles specified. Any modification to specifications, or any other combination of specifications made after the shipment of the truck, requires prior written approval from Mitsubishi Caterpillar Forklift America Inc. ("MCFA"). (See ASME B56.1 Part II 4.2.) Also be advised that overall operating visibility may be affected by the mast configuration and mast options of your truck. Therefore, you may need to add ancillary [auxiliary] devices or modify your operating practices. Consult your dealer for further information.

Call-out numbers shown in diagram correspond to the first column of the specifications chart.





Durability And Support

Cat lift truck dealers put customer needs first, with the most comprehensive customer support programs in the industry.

Unlimited Hours Warranty covers parts and labor for one year, regardless of service hours.

Parts Fast or Parts Free Guarantee ensures next-business-day delivery of parts for all brands of lift trucks or they are free, including freight.

Free Loaner Service Guarantee provides a lift truck until the repair is done if your lift truck is not repaired right the first time and within the quoted time.

Contact your Cat lift truck dealer for complete terms and conditions of these guarantees.

Cat Lift Trucks offers an extensive range of products and services. Your Cat lift truck dealer can provide options and additional visual and audible warning devices geared toward your specific applications and requirements. Operator training programs are also available to boost productivity and to help reduce the potential for product damage and personal injury.

Your Cat lift truck dealer can also provide a variety of financing and leasing options to suit the needs of your business.



CATERPILLAR®

1-800-CAT-LIFT
www.cat-lift.com